

1993

GMC TRUCKS



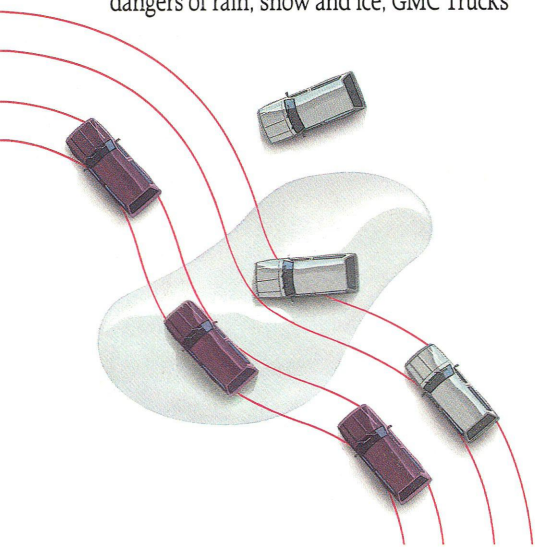
GMC
TRUCK

1993 GMC TRUCKS

We believe your next vehicle should be able to take you almost anywhere, and do virtually anything for you.

A view reflective of a truck company. One that has, since 1902, paid unwavering allegiance to those strengths and values that can only come from a truck. And can be seen throughout our 1993 GMC Trucks.

To help see you safely through the dangers of rain, snow and ice, GMC Trucks



Sport utility model equipped with 4-wheel ABS illustrated. Standard on all light-duty GMC Trucks: The added safety of anti-lock brakes* for sure, controlled stops in rain, snow or ice.

are equipped with 4-wheel or rear-wheel anti-lock brakes standard,* for steering control during hard braking on wet or slippery surfaces. In fact, GM is factory-installing standard four-wheel anti-lock brakes on all sport utilities



and vans. A comfort enhanced by the superior traction of 4-wheel drive or all-wheel drive systems that are either standard or available on virtually every new GMC Truck.

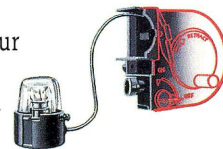
To accommodate you over long distances, GMC Trucks come equipped with a variety of storage consoles, cup holders, cargo nettings and tie downs.

Other benefits of GMC Truck's experience: Unique "Dutch" doors, avail-



able on Safari, that allow you to access rear storage without unhitch-

ing your trailer or camper. And — available on Sierra, Suburban and Yukon, an underhood trouble light with a retracting 30-foot cord, a boon to anyone who's ever had to change a rear tire or search for lost keys on a dark night. Two traumas, incidentally, that can also be handled by calling our



Commitment Plus toll-free number to gain access to roadside service. We're there 24 hours a day.

For more information on our GMC Truck strengths, why not give us a call: 1-800-GMC-TRUCK.

All comparisons exclude other GM products.
* Sierra and Sonoma models equipped with rear-wheel anti-lock brakes which operate in 2WD only on 4x4 models.

GMC and GMC Truck are registered trademarks of General Motors Corporation. Club Coupe® Delco® Electric Shift Transfer Case® GM® GMAC® Insta-Trac® Jimmy® Rally® Safari® Sierra® Sonoma® Sportside® Suburban® Vortec® Wideside® and Yukon® are registered trademarks of General Motors Corporation. GMC Truck™ and Commitment Plus/GMC Truck Logo™ are trademarks of General Motors Corporation.
6007-93 Litho in USA



THE STRENGTH OF EXPERIENCE

Seated comfortably behind the wheel of a GMC Truck, your first sensation is a feeling of almost omnipotent capability. The benefit of a seating position that places you a bit above it all, and endows you with a heightened sense of reassuring command and control.

A perception that becomes reality as you drive your GMC Truck.

Highway lines that once denoted the outer limits of your travel suddenly become gateways to freedom and adventure entered into by the mere push of a button. Loads once left behind with lesser vehicles are now effortlessly accommodated. The seeming contradictions of truck power and strength, interior elegance and riding smoothness are seamlessly blended. In vehicles that not only reward you with their luxury, but expand your horizons with their strength.

Moments that can be made possible only by a truck company. One that has, for 90 years, pursued without distraction a clear vision of all that trucks can be, and all that trucks can do for you. And, with the GMC Trucks outlined in this brochure, deliver convincing arguments that there's a place for a truck in your life.

A 1993 GMC Truck.



1993 GMC TRUCKS

SIERRA



1993 features include new Solar-Ray® glass that helps cool the interior and reduce fading, new Scotchgard® fabric protection on interior cloth surfaces, and electronically-controlled 4-speed automatic transmission for smoother shifting and towing. Sierra's 165-hp 4.3L engine is the largest standard V6 in its class, and larger engines are available to meet tougher demands.

SUBURBAN



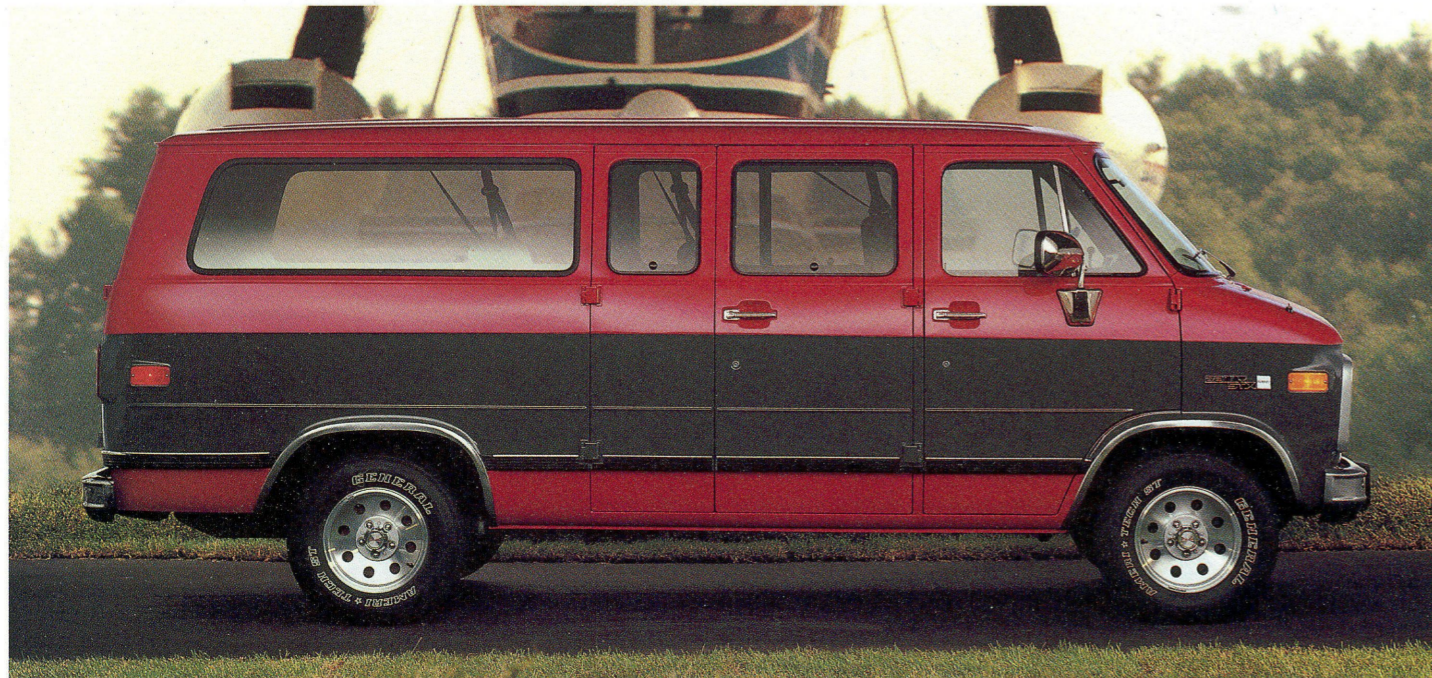
The 1993 Suburban has a long wheelbase and independent front suspension for smooth ride and handling. Middle seat folds forward for increased load space; third-seat passengers enjoy the comfort of a recessed footwell and separate available climate control system! Towing is a full 10,000 pounds! The safety of 4-wheel anti-lock brakes is standard on all models; shift-on-the-fly Insta-Trac® is standard on all 4WD Suburbans.

YUKON



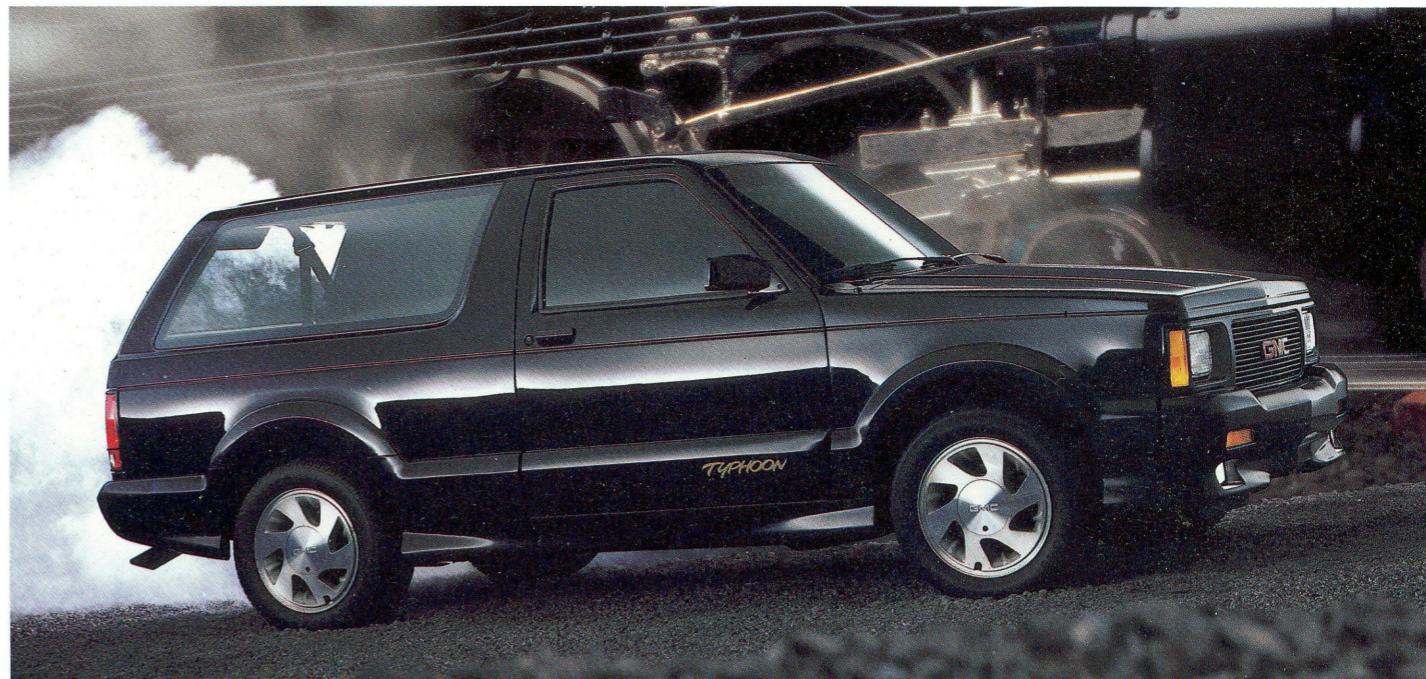
The full-size sport utility that can comfortably accommodate six adults! Features a long wheelbase and independent front suspension for smooth ride and handling on or off the road. Electronically-controlled automatic 4-speed overdrive transmission, powerful 5.7L V8, 4-wheel anti-lock brakes and 7,000-lb¹ towing capacity are all Yukon strong points. Cup holders provided with front bucket and available bench seatings.

RALLY



With three wheelbases and six engines available, you can customize a Rally to your specifications – up to and including one that accommodates up to 15 people³ and tows 10,000 pounds! Like all 1993 GMC Trucks, Rally's interior cloth surfaces are protected with Scotchgard®, cooled and shielded by Solar-Ray® glass. Available remote keyless entry allows you to lock and unlock doors from a distance. A 4-wheel anti-lock braking system is standard.

TYPHOON



Typhoon moves on the kind of power you wouldn't expect from a sport utility: A 280-hp turbocharged, intercooled V6 coupled with all-wheel drive, sport suspension and 4-wheel anti-lock brakes. Typhoon's equally inspiring inside, with leather seating areas, adjustable lumbar support and available CD. Motor Trend[™] called it "a unique opportunity to enjoy Porsche performance and sophistication in an American sport/utility-truck wrapper."

SONOMA



A compact pickup built like our big ones, with double walls of two-sided galvanized steel. In Sonoma 4x4 is the biggest engine you can get standard in a compact truck: the 165-hp 4.3L V6. It's also available in 2WD models, and for even more of a good thing, there's a 195-hp 4.3L Enhanced V6 available. Both engines have balance shafts for smoothness; the available 4-speed automatic is electronically controlled. Rear-wheel anti-lock brakes are standard.²

JIMMY



All the power and strengths of a truck seamlessly blended with luxury. Powerful 165-hp and available 200-hp V6 let you tow up to 5,500 pounds¹; the rear compartment accommodates 35.2 cubic feet of cargo even before you fold down the rear seat. Jimmy SLT coddles you with leather seating areas and an available CD, while Softride suspension³ smooths the road. Electric shift transfer case is standard on 4x4s. For 1993, a 2-door SLT joins the 4-door.

SAFARI



Our Safari XT comfortably accommodates eight plus luggage!¹ Available "Dutch" doors, unique to Safari, allow easy access. Biggest standard engine in its class provides the most towing power in its class – a full 5,500 pounds!¹ Standard 4-wheel anti-lock brakes can be combined with available all-wheel drive for outstanding traction and added safety in perilous driving conditions. Available with three seating configurations.

**10/91 ¹When properly equipped including trailer, passengers, cargo and equipment. ²1- With available seating. ³2- Rear-wheel ABS operates in 2WD only on 4x4 models. ⁴3- Available on 4-door, 4x4 models.



Available Suburban SLE Custom Cloth interior.



One of three seating configurations available with Safari.